

GENERAL MEETING INFORMATION

Wilfrid Laurier University, on behalf of the Standards Council of Canada,

Invites you to the ISO SC2/WG2 conference to be held in

Waterloo, Ontario, Canada

From

Monday, June 19 to Friday June 23, 2023

HOSTING ORGANIZATION

Wilfrid Laurier University, Waterloo, Ontario

Primary Contact: Karljürgen Feuerherm

Email: kfeuerherm@wlu.ca

Direct Tel: 1 (226) 747-2335

MEETING TIMETABLE

All meetings are planned to begin at 9:30 AM and end at 4:30 PM. However, the ISO convener may adjust the schedule as required depending upon our scheduling needs.

Date	Time	Meeting activity	Meeting Room/Venue	Room capacity
June 19, 2023	9:30–11:30	SC2 Opening Plenary	Senate and Board Chamber	Max. 175
June 20–22, 2023	9:30–12:00 13:00–16:30	Working Group 2 sessions	Senate and Board Chamber; Break-out room: Paul Martin Centre	Max. 175
June 21, 2023	18:00–20:00	Delegate and Attendees' Reception	Veritas Café	Max. 125
June 23, 2023	9:30–12:00	SC2 Closing Plenary	Senate and Board Chamber	Max. 175

MEETING VENUES

SENATE AND BOARD CHAMBER, WATERLOO CAMPUS
(Zoom-capable main venue)

75 University Avenue West

Waterloo, Ontario, N2L 3C5

[Senate and Board Chamber in Google Maps](#)



1 SENATE AND BOARD CHAMBER INTERIOR; TABLES WILL BE REPLACED WITH STANDARD RECTANGULAR TABLES ARRANGED IN TYPICAL U-FORMAT

PAUL MARTIN CENTRE, WATERLOO CAMPUS
(Zoom-capable adhoc break-out room)

75 University Avenue West

Waterloo, Ontario, N2L 3C5

[Paul Martin Centre in Google Maps](#)



**2 PAUL MARTIN CENTRE
INTERIOR**

VERITAS CAFÉ, WATERLOO CAMPUS

75 University Avenue West

Waterloo, Ontario, N2L 3C5

[Veritas Café in Google Maps](#)



**3 VERITAS CAFÉ,
EXTERIOR VIEW;
INTERIOR SEATING
AVAILABLE**

ACCOMMODATION

UNIVERSITY ACCOMMODATION

Wilfrid Laurier University is pleased to provide accommodation on campus for the budget- and convenience-minded at King Street Residence, 200 King Street North (see Campus Map, above).



Rates at the time of writing (February 2023) in Canadian dollars:

Room option	Cost/night	Tax	Total/night
Private bedroom with semi-private washroom	\$69.00	\$8.97	\$77.97
Private bedroom with private washroom	\$89.00	\$11.57	\$100.57

Note in particular:

- ☐ Wi-Fi in residence
- ☐ Complimentary parking
- ☐ Kitchens and lounges with cooking facilities
- ☐ Air-conditioned
- ☐ Card-operated laundry
- ☐ Nearby dining options
- ☐ Easy access to public transportation

See Hotel Laurier at www.wlu.ca/hotel for further information; contact Susan MacKenzie at conferences@wlu.ca to confirm details and to book.

SELECTED COMMERCIAL HOTELS

Prices are listed as tax-inclusive as of the time of writing and are for provided for comparison purposes. *Please confirm actual costs and other details before booking!*

Hotel name	Sample rate	Distance to venue	Services
Delta Hotels Waterloo 110 Erb St. W Waterloo, ON N2L 0C6 519-514-0404	\$208—Standard King or Double Queen	1.8 km 22 min walk	Internet (wired, non-wired), cable/satellite, parking (\$12/day), fitness centre Near to Waterloo Park and shopping and dining options
Inn of Waterloo 475 King St. N Waterloo, ON N2J 2Z5 519-804-1130 info@theinnofwaterloo.com	\$130—Queen Traditional	2.1 km 26 min walk	Complimentary wi-fi, parking, continental breakfast, pool, fitness centre, self-serve laundry
The Walper Hotel 20 Queen St. S Kitchener ON N2G 1V6 519-745-4321 reservations@walper.com	\$234—King	4.9 km 16 min by transit	Complimentary internet, fitness facility Centre Kitchener shopping and dining
Crown Plaza Kitchener 105 King St. E Kitchener ON N2G 2K8 855-516-1090	\$185—King	5.1 km 20 min by transit	Complimentary internet (wired and wi-fi), cable, refrigerator, fitness centre, pool Centre Kitchener shopping and dining

Many more options can be found easily by [Google Maps](#).

MAPS

CAMPUS MAP

WILFRID LAURIER UNIVERSITY - Campus Map



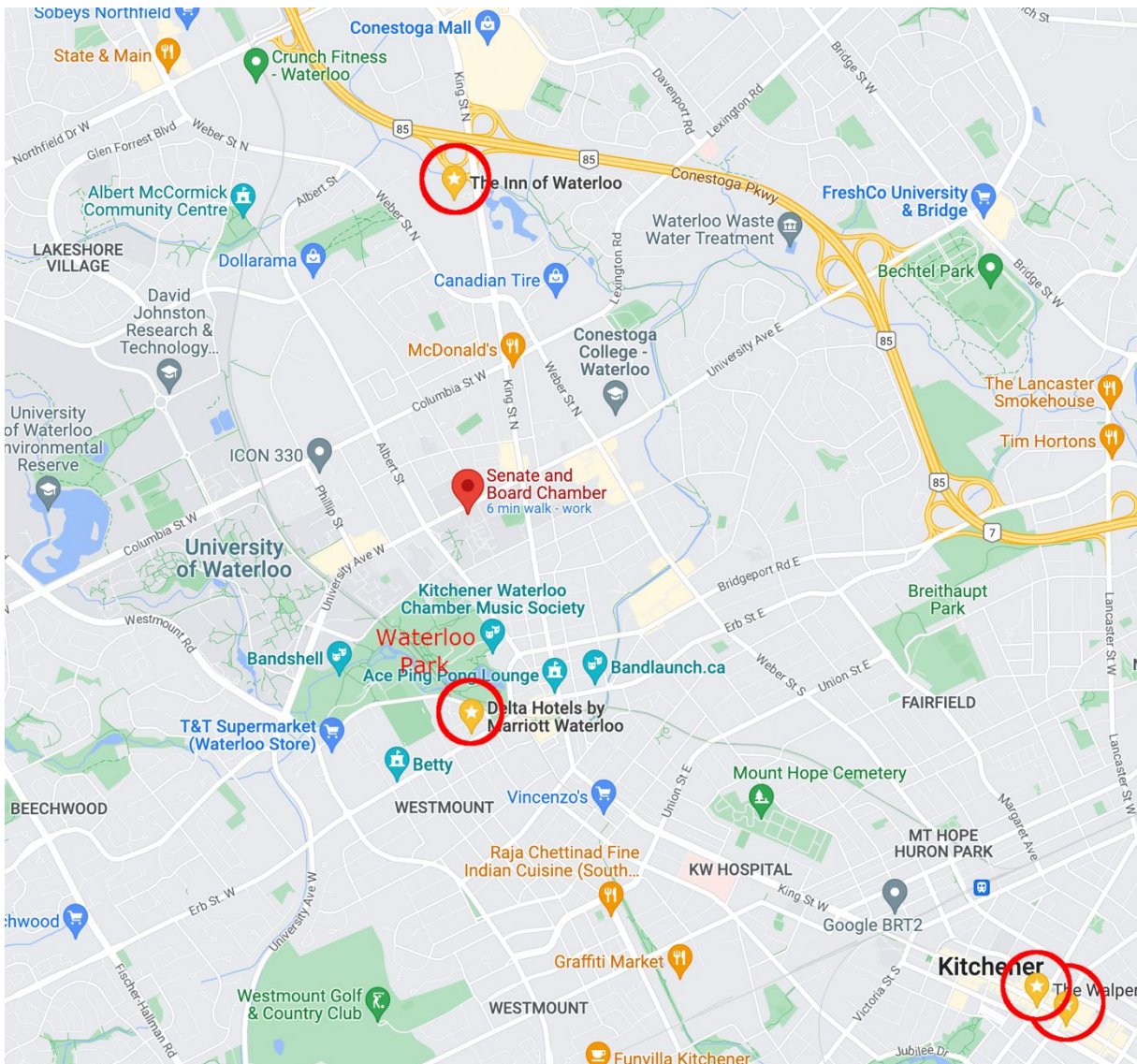
Main venues are marked with a red ellipse
Exterior entrance to Veritas Café marked 'V'
King Street residence in red rectangle'

LAURIER 
Inspiring Lives.

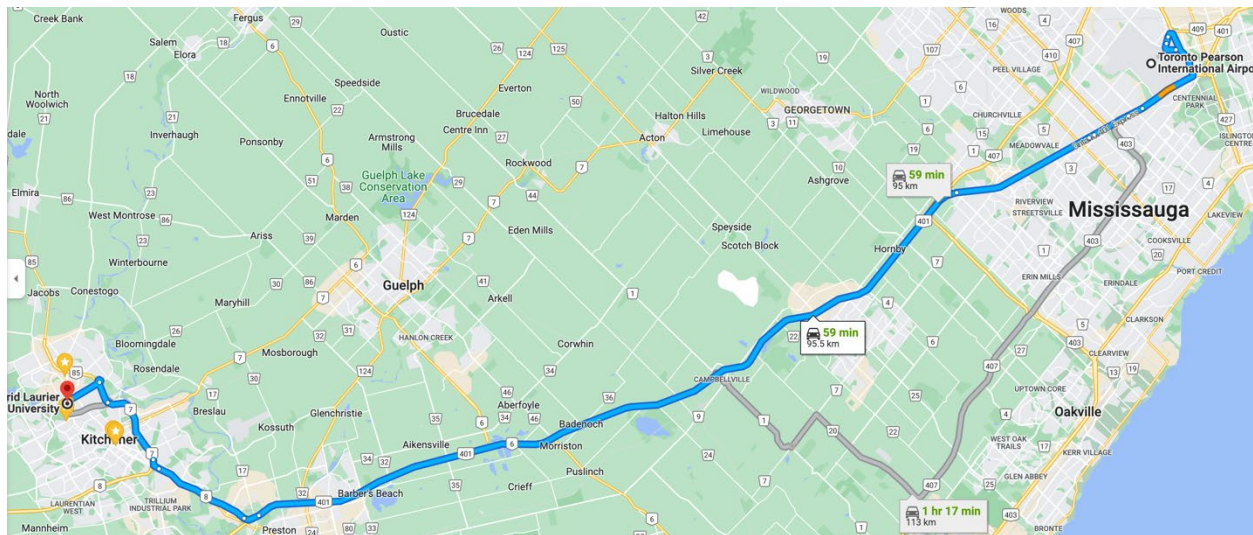
Note the orientation of the map, with North facing downwards. Parking lots are indicated in red rectangles.

MAIN VENUE IN CONTEXT

The *Senate and Board Chamber* is shown here in relation to the hotels listed above, indicated by red circles. *Waterloo Park*, which is within minutes of the campus, is also indicated in red type, near to the Delta Hotel.



CAMPUS IN RELATION TO TORONTO PEARSON INTERNATIONAL AIRPORT
The map shows a sample route for driving by car from Toronto Airport (YYZ) directly to the Wilfrid Laurier Campus.



For airport and travel information, see the relevant sections below.

ENTRY TO CANADA

All visitors to Canada must hold a passport valid for a period of at least six months from the date of departure from Canada. In addition, visitors from some countries must obtain a visa prior to travel, and visitors from almost all other countries must obtain an [electronic travel authorization](#) (eTA). You can learn more about electronic travel authorization or [visa requirements](#) visiting the [Immigration, Refugees and Citizenship Canada](#) website.

Please note that *Standards Council Canada* is not responsible for issuing visas, and that a visa invitation letter is not a visa. If you need a visa invitation letter, please fill out a visa invitation letter request form (see Annex A) and send to isd-eni@scc.ca.

AIRPORT

Toronto is served by [Toronto Pearson International Airport](#).

General information on travel from Toronto Pearson airport is available [here](#).

TRANSPORTATION

TRAVEL BY CAR

Travel time, assuming no interruptions or complications is about 1 hour, depending upon starting and ending points, of course. [Car rental](#) is available at the airport.

PUBLIC TRANSIT

Various options are available for travel to campus by public transit. As a rough estimate, one can count on something above 2 hours travelling this way. Check [Google Maps](#) for current routes and times.

As an example, from the airport, one can take GO Bus Route 40 from Terminal 1 to Square One Terminal. From there, Route 25 or 25C will lead to the university. Please note that Route 25C is the *express* bus route. Cost (currently \$17.55, tax included) can be verified on this [website](#). This is likely the most budget-friendly option.

Some transit contact information follows:

[GO Transit](#) — [Ticket information](#) 1-888-438-6646

[MiWay](#) — [Ticket information](#) 1-905-615-4636

[Toronto Transit Commission \(TTC\)](#) 1-416-393-4636 (mainly Toronto and area)

AIRWAYS TRANSIT

Airways Transit is the premier provider of airport ground transportation, providing door to door service. They can be found in both Terminal 1 and Terminal 3. You can check out their [private airport rate by service area webpage](#) for an estimated price. As of February 2023, the price from Pearson International Airport to Waterloo is \$185 (1–3 passengers) or \$218 (4–8 passengers) one way.

TAXI

Taxi rates from the airport to Kitchener centre (approx. \$130) can be found [here](#). Local transit through [Grand River Transit](#) will likely be required from this point.

UBER

Ride-hailing services such as [Uber](#) may be helpful for various needs, including providing transportation to and from the airport. Costs will have to be determined if and when the service is requested.

PARKING

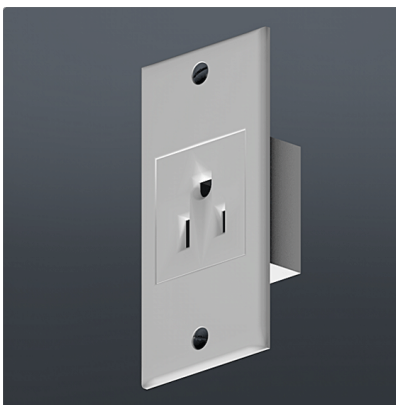
Guests of Hotel Laurier have complimentary parking. Parking at hotels is typically available and may or may not be complimentary.

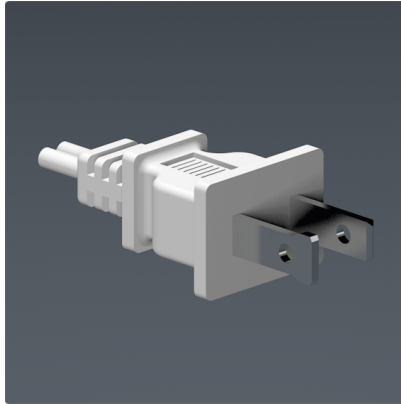
Parking on campus is available at several Pay and Display lots on, but in general, parking on campus can be tight, so be advised.

For further information, see [Waterloo Campus Parking](#). Parking lots are numbered in the map above, and a parking map is also available on that site.

ELECTRICITY

Standard electrical supply in Canada is 120 Volts at 60 Hertz. The [IEC plug types](#) in use are A and B. Hotels may have a limited number of transformers or converters; however, delegates are encouraged to bring their own. Hotel rooms are usually supplied with hair dryers and irons.





TELECOMMUNICATIONS

The international dialing prefix in Canada is +011. Calls made to numbers within Canada or the United States do not require an international dialing prefix, however *long distance calls made to locations within Canada or the United States area* must be prefixed by +1.¹ Internet access may also be available in coffee shops, malls, certain shops, and at hotels.²

LANGUAGE

The official languages of Canada are English and French.

Services in other languages may be available depending upon the area local population concentration, e.g., German, Korean, Mandarin, etc.

CURRENCY

The currency in Canada is the Canadian Dollar (\$, CAD), which is divided into 100 cents. Notes come in \$5, \$10, \$20, \$50, and \$100 denominations. Coins come in 5¢, 10¢, 25¢, 50¢, \$1, and \$2 denominations.

¹ Where and when something is long distance may be difficult to determine, particularly where mobile numbers are concerned. If in doubt, try it one way; if that should be incorrect, a voice message will indicate that the other option is required.

² Note: Some hotels may charge access fees for internet access.

CREDIT AND DEBIT CARDS

Visa and *MasterCard* are the most widely accepted credit cards in Canada. Some retail establishments may also accept *Discover* or *American Express* cards. Debit cards using the *Interac* or *NYCE* networks may be used at most retail establishments. Please contact your card provider prior to travel to ensure that your card can be used in Canada.

TAXES

Most goods and services are subject to a 13% value-added tax known as Harmonized Sales Tax or HST. HST is *not included in advertised prices* and is added at the register upon purchase.

There are additional taxes charged on alcohol, and room taxes on accommodation may also apply.

TIPPING

Tipping is customary in sit-down restaurants (service charges are not automatically added to restaurant bills, except in the case of large groups). Tip for take-away at your discretion.

An average tip for satisfactory service is typically 15% to 20%, but in most cases, this can be customized as desired.

Hairdressers and taxi drivers are usually tipped at the same rate, while bellhops, doormen, porters and similar service providers at hotels, airports and stations are generally paid \$1 per item of luggage carried.

RESTAURANTS

There are numerous small restaurants in the immediate vicinity of the campus along University Avenue and King Street, among others, offering a great variety of choice. A convenient list will be provided on the first day of the conference.

On the campus itself, most venues are closed during the summer; however, [Veritas Café](#) (see Campus Map above) will be open on weekdays.

CONSULAR ASSISTANCE

Global Affairs Canada maintains a [list of diplomatic missions in Canada](#) which are able to provide consular assistance if required.

EMERGENCIES AND INSURANCE

The emergency number for paramedic, police, and fire services is 9–1–1. Attendees are encouraged to obtain travel, medical, personal, accident, and luggage insurance prior to departure. The *Standards Council of Canada* accepts no liability for any loss or injury incurred.

CLIMATE

The average temperature in Waterloo in June is between 12°C and 24°C. Rain may occur. Up-to-date information on the weather through the Government of Canada [Weather Office](#) or through [The Weather Network](#).

TOURISM

Kitchener-Waterloo is home to several cultural and other attractions. Information on items of interest in Waterloo Region can be found [here](#).

A [train](#) is available from Waterloo to St. Jacobs, a nearby Mennonite artistic village as well as Elmira, a little further afield.